



# Swansea Campus Prospectus

2024-2025



## Introduction

---

This School is a registered and accredited Independent School established to provide a quality education to the UK community and, in particular, to Brethren students.

The School's Ethos, Values Statement and Guiding Principles govern the School and are reflected in our policies and procedures, all of which meet statutory and registration requirements for Independent Schools.

# Contents

About OneSchool Global	4	
OneSchool Global Ethos	5	
OneSchool Global Vision and Mission Statements	6	
Learning to Learn Framework	7	
Student Persona	8	
OneSchool Global Values	9	
Welcome	10	
History	12	
Global House System	13	
Our Curriculum	16	
OneSchool Global Awards	17	
Career Advancement Programme	18	
Policies	20	
Teachers and Staffing	21	
School Information	22	
Testimonials	24	

## About OneSchool Global UK

OneSchool Global is a global school, with over 120 campuses in 20 countries, including cities such as New York, Paris, Sydney, Rome, Auckland, Copenhagen, Los Angeles and San Francisco.

With an innovative approach to learning, delivered in cutting-edge, technology-empowered physical and digital learning environments, OneSchool Global is preparing life-ready students who learn how to learn, and achieve.

Our self-directed learning model places students at the centre of all that we do. We challenge traditional and dated pedagogy and embrace technology to deliver the best possible learning outcomes for our students.

OneSchool Global recruits and develops high quality teachers. Our teachers partner with our students in their learning and rather than being considered the 'sage on the stage', they act as both teacher and coach to build students' skills, resilience and independence.

Our in-house Teacher Academy provides teachers with the training they need to be the best they can be. We provide teachers with the skills they need to be successful at OneSchool Global and skills that will make them highly capable and competent in teaching in a digital world.

OneSchool Global is a school that lives its values and is guided by the School's ethos. The School is generously supported via the donation of time and financial support from members of the Plymouth Brethren Christian Church.



Click on the OneSchool logo to learn more about how this cutting-edge schooling system was inspired and how this awesome vision is being realised.





## OneSchool Global Ethos

At OneSchool Global, we are committed to a culture where students are encouraged to develop their full potential and acquire the discipline of learning how to learn while upholding Christian teachings and beliefs.

The truth and authority of the Holy Bible and strong family values underpin the commitment of the School to provide quality in every facet of education  
- curriculum, teachers, facilities, management, and discipline - in a safe and caring environment.



## OneSchool Global Vision Statement



### **A global education ecosystem that develops life-ready students who learn how to learn and achieve.**

To ensure our students are life-ready, we need to teach differently. To be life-ready in today's world, our students need to learn how to learn. To be life ready, our students need to develop independent and critical thinking skills, and skills such as teamwork and collaboration

It is these skills that form an aptitude base that allows a student to adapt. Most importantly, these critical skills are transferable. When industry changes, when entire fields of work and job types are no longer required, it will be the life-ready, critical thinkers who stand the test of time and find new ways to add value.

We are prepared to do things differently at OneSchool Global to deliver on this vision. We challenge traditional and outdated pedagogical models. Our learning centres, the way we embed technology in them, and ultimately our students, are a testament to this.

## OneSchool Global Mission Statement



### **“Learning to Learn”**

The School is committed to creating and delivering learning programmes that meet the educational needs of each student, and to nurture the attitudes and skills necessary for the continual learning and personal growth throughout life.

“Learning to Learn” means to use learning as a tool whereby students are equipped with the ability to think critically, process information perceptually, analyse data accurately, and evaluate situations intelligently in order that they fulfil their true potential.

## The Assignment



- is a contract that establishes
  - what the teacher needs to teach
  - what the student can learn on their own
  - what the student needs to do to demonstrate their learning
- is anchored by a Big Question
- aligns to the curriculum
- provides choice and differentiated pathways
- defines learning intentions, success criteria
- includes clear checkpoints, deadlines and feedback
- contains formative/summative assessments
- is shared between students, teachers and campuses

## The Study



- is student led
- is where students make a plan and execute it
- is time to work on tasks contained in The Assignment
- includes focused, semi-collaborative and collaborative learning
- enables coaching from teachers and peers

## The Tutorial



- provides students with 1:1 (or small group) specialist support
- can be requested by students or teachers
- enables individualised support/extension

## The Lesson



- is teacher led
- is time for 'what the teacher needs to teach'
- enables direct instruction
- involves the whole class

*Learning to Learn*



# A Quality OSG Student...



## **Lives the Values:**

Committed to displaying integrity and care & compassion, is respectful of others and takes responsibility for their actions.



## **Is Self-Directed:**

Understands the Learning to Learn Framework and is driven by personal goals, initiative, and self-discipline to grow and achieve.



## **Is a Team Player:**

Builds strong connections with educators, on foundations of trust and respect. Is collaborative and supportive of others in achieving common goals.



## **Is Diligent:**

Committed to excellence, hard work and timeliness in all responsibilities and tasks.



## **Is a Problem Solver:**

Seeking innovative, creative and effective solutions to challenges and obstacles.



## **Takes Ownership:**

Wears school uniform with respect, manages distractions maturely, and makes good decisions about behaviour and attitude.



## **Has a Positive Attitude:**

Applies constructive thinking and has a positive approach to school.



A global education ecosystem that develops life-ready students who learn how to learn, and achieve.





## OneSchool Global Values



At OneSchool Global each student, parent and staff member shall uphold the values of the School which include:

**Integrity** – uprightness, honesty and decorous conduct, governed by the Holy Bible,

**Care and Compassion** – kindness, consideration and generosity to all,

**Respect** – for all people, property, opinions and those in authority,

**Responsibility** – for our actions, progress and the environment and,

**Commitment** – to self-discipline and the pursuit of excellence.



## Welcome Message

Welcome to OneSchool Global UK Swansea Campus

We are your local campus of a truly global school, where our students are given the freedom and resources to self-direct their learning, with a balanced curriculum to ensure they achieve their full potential.

“Learning to learn” is at the heart of the way we operate at OneSchool Global. This takes place in the Learning Center; a flexible space which is split into zones to help the students navigate their journeys, utilising both teacher and peer support and Video Conference connected lessons with other OneSchool Campuses.

This enabled OneSchool Global Swansea Campus to become an online school almost overnight in March 2020, therefore giving the students the best chance to continue their learning during outwardly difficult times.

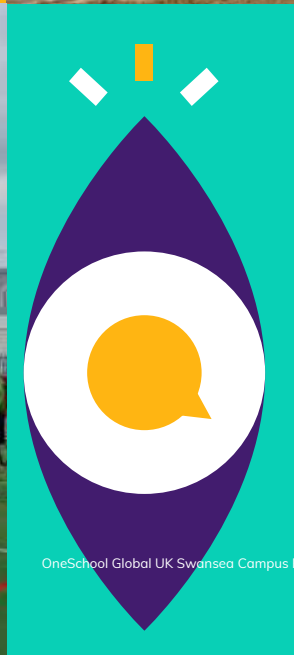
Our aim is to reach a level of “Excellence in Education” through a cutting-edge delivery from our teaching team with results that are being driven and achieved - assisting the students to plan to be life ready and the “best that they can be”.

Integrity, respect, responsibility, commitment, care and compassion are the OneSchool values that we all hold, whether a student, a professional, or a volunteer on Campus.

Please come and visit to see us in action!

**Mr Max Dormer**  
Lead Campus Administrator









## Our History

OneSchool Global UK Swansea Campus started out in September 2003 as Focus School Swansea Campus, Keystone Education Trust, situated on the first floor of a business premises, with just 16 students from Year 7 to 12. The school grew, in every sense of the word, and in September 2005 we purchased a large modular building, located on the land at the rear of the premises and the school moved in. This site was expanded over the following 9 years with an assortment of other portable cabins.

In 2010, we acquired an old Victorian school building, just 8 miles from our Secondary school site, and opened a Primary department.

In 2014, we were thrilled to trade-in our cabins and ageing Victorian Primary school for a solid 3-storey concrete structure, an ex-fire service building. Our Primary and Secondary departments merged to become one school, Years 3 to 13 we now have 28 pupils for the academic year 2024/25.

## The Global House System



**The Global House System is based around the ethos of inclusion and encouraging teamwork.**

It is designed to reward academic work, effort, sporting achievements and good citizenship. It is the role of the House System to embrace all students and provide a climate of success for all.

The Global House System consists of three houses each with an assigned colour as shown below. These houses are run globally throughout our affiliated schools, meaning that we can encourage teamwork with other regions, not just within our campus, thus enhancing our students' desire to strive for their best, due to a much wider area of healthy and constructive competition.

Each student is assigned to a House and will normally remain in that House for his/her duration at the campus. Many house events and competitions are run which link to learning and help foster both teamwork and self-directed learning skills. The Global House System encourages healthy participation in activities and is well supported by staff and student leaders.



## Charitable Fundraising

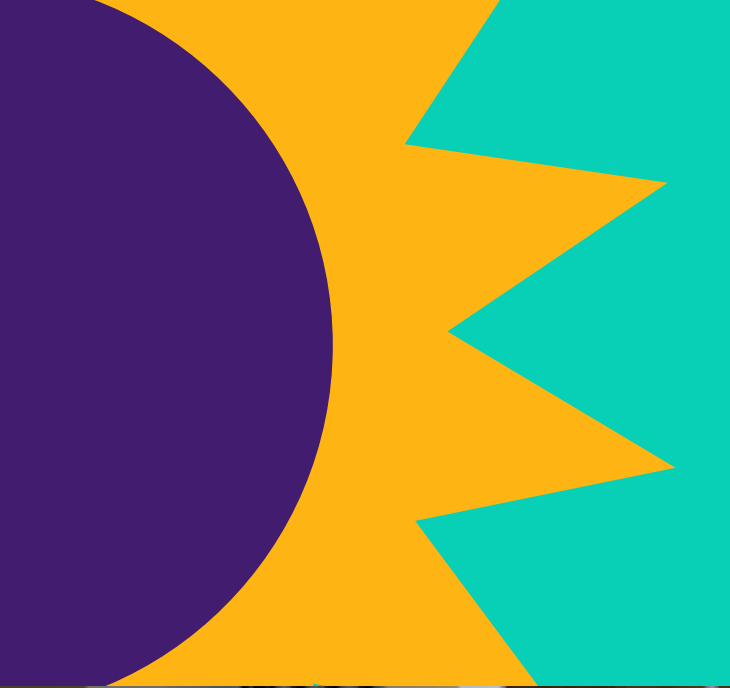


**At Swansea Campus the whole community is committed to helping those less fortunate than ourselves.**

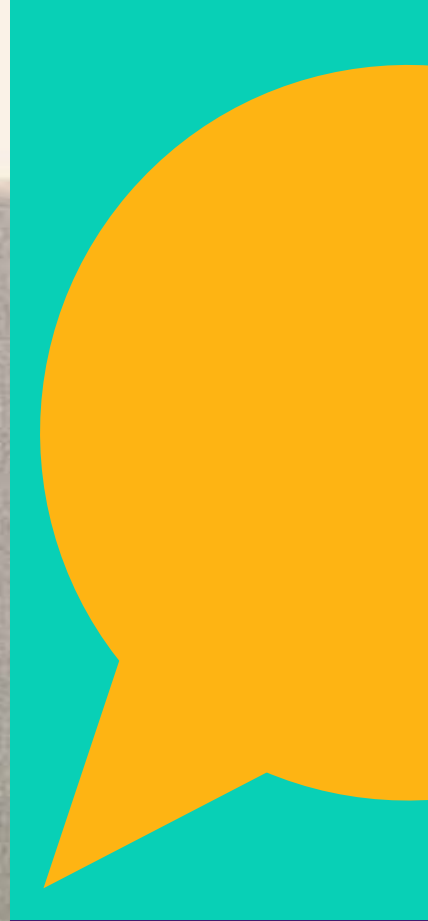
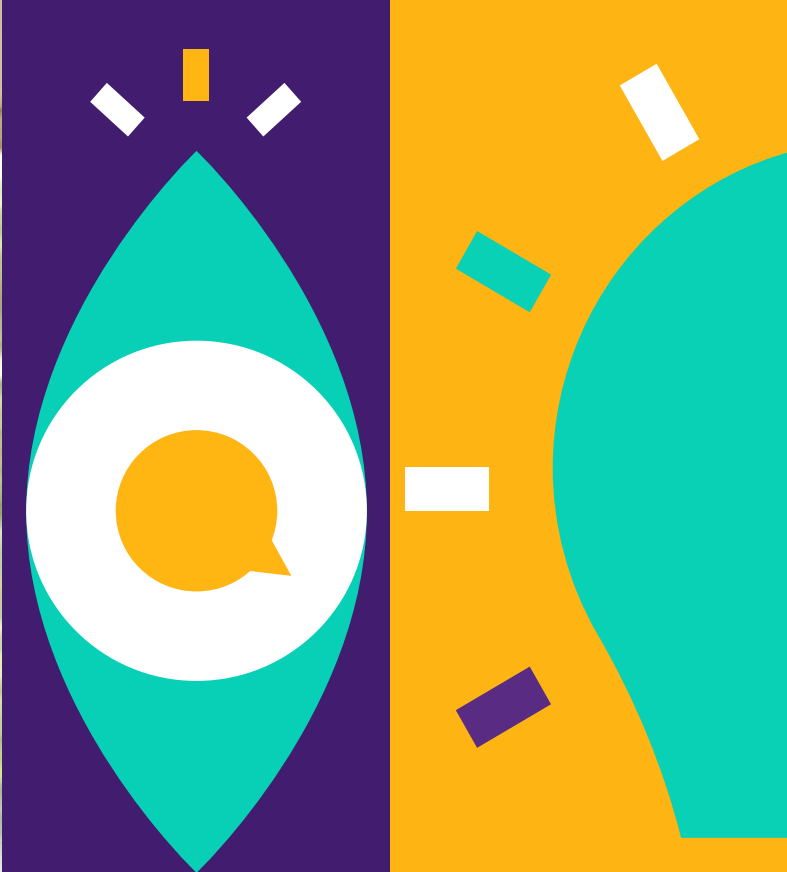
There is a strong, student-led culture for fundraising and charity at Swansea Campus. The majority of fundraising initiatives are student-led, with representatives from our student council coming up with ideas for school-wide events. Not only does each initiative raise hundreds of pounds for charity, but it also gives students valuable experience in organising and leadership skills.

Charitable donations made recently include:

- Fairtrade
- Adref (homeless charity)
- Kids Cancer Charity
- Ty Hafan
- Guide Dogs for the Blind
- Wales Air Ambulance
- Macmillan
- Cancer Research UK
- The Noah's Ark Appeal (Children's hospital)
- Ukraine Appeal
- George Thomas Hospice







“

It was a real pleasure to teach at your school...your pupils were superb!

”



# Our Curriculum



**...wholly supports the School's ethos in promoting Christian values and provides a balance, ensuring students develop academically, aesthetically, morally and physically.**

Swansea Campus has adopted the Curriculum Policy developed by OneSchool Global UK. The curriculum is designed to ensure that every student can realise their potential. The curriculum is assignment-based, enabling the self-directed ambition of the organisation to be fulfilled. All students follow a personalised and challenging curriculum.

## Years 3-6

Art  
Design & Technology  
English  
Geography  
History  
IT  
LAMDA  
Mathematics  
MFL  
Music  
PSHE  
Physical Education  
Science

## Years 7-8

Art  
Citizenship  
Design & Technology  
English  
Food & Nutrition  
Geography  
History  
IT  
LAMDA  
Mathematics  
MFL  
PSHE  
Physical Education  
RSE  
Science

## Years 9-11

Art, Craft & Design  
Citizenship  
Design & Technology  
English  
Food & Nutrition  
French  
Geography  
German  
History  
ICT  
LAMDA  
Latin  
Mathematics  
PSHE  
Physical Education  
RSE  
Science

## Years 12-13

All of our students progress to the sixth form and are offered a broad range of curriculum options designed to meet the abilities and aspirations of all our learners.

Cambridge International A Level qualifications are offered in Art & Design, Design & Technology, English, History, Geography, Mathematics, Accounts, Law, Business Studies, French and German, and Global Perspectives alongside Cambridge Technical qualifications in IT, Digital & Creative Media and Business, a range of Level 2 qualifications, and Autodesk Fusion 360.

Additional subjects include Physical Education, PSHE, and RSE while courses such as Chef Skills, LAMDA Speaking in Public, London Institute of Banking and Finance and Extended Project Qualifications are available to students.

Digital technology, including Zoom and Canvas platforms enable campuses to collaborate with other schools for subject delivery which enables students to study subjects that would not normally be economically viable.

Xello and the Careers Advantage Programme also adds a unique and high quality vocational element to our curriculum which supports all students in gaining a better understanding of their career pathway and progression routes helping to ensure they are life-ready on graduation from OneSchool Global UK and excited about embarking on future post graduate qualifications.

Extra-Curricular activities are a strength of our school. Our students have the opportunity to collaborate on extra-curricular projects and activities at campus, regional and global level. Recent highlights including our termly Choir Festival, annual Public Speaking Competition and inter campus debating opportunities. Our extra-curricular offer is a key part of our curriculum and an area of continuous growth and development for OSGUK.

# OneSchool Global Awards



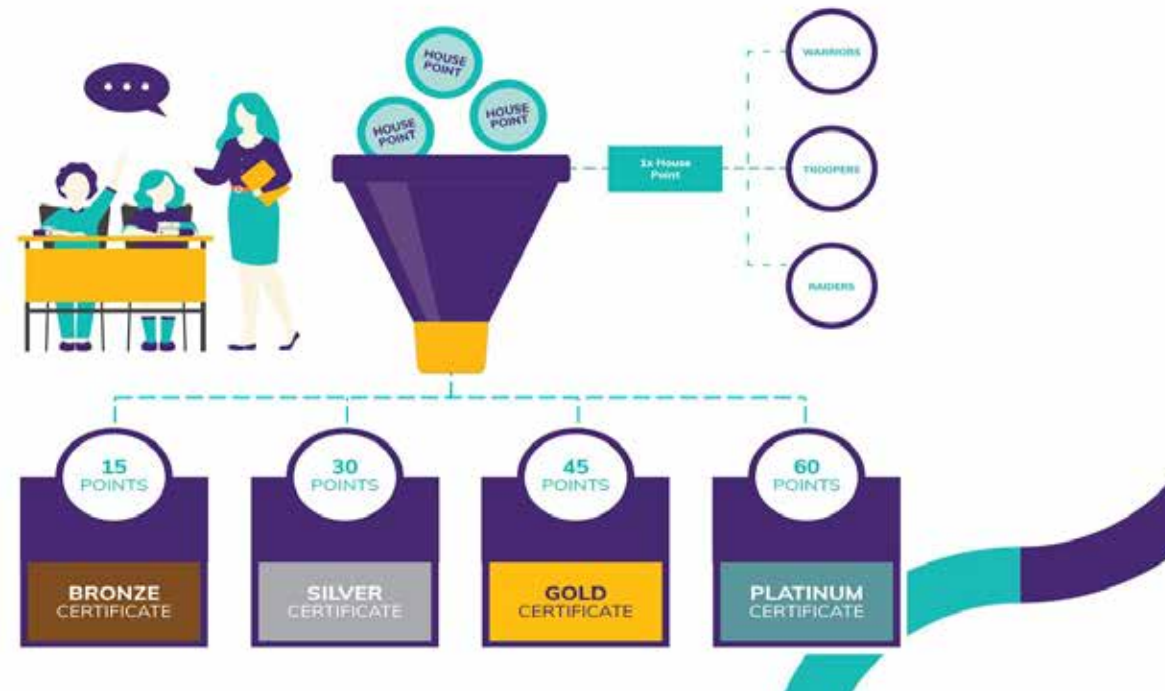
## House Points:

A House Point is given when a student demonstrates notable qualities of the OSG Student Persona, either in their academic or personal achievements.

House Points recognise the individual student and they also add to the 'House' total for the House that the student belongs to. The winning house each year is awarded the House Cup, for the Campus, Regionally and Globally.

## Merit Certificates:

When a student receives a certain number of House Points during the year, they gain a Bronze, Silver, Gold and Platinum Merit Certificate.





## Career Advancement Programme

**Bridging the gap between school and work; OneSchool Global UK offer a unique career advancement plan to all our students and this is proven to prepare them for the world of work:**

### What is CAP?

The Career Advantage Programme (CAP) provides all students with the opportunity to gain the skills and aptitude to achieve rapid success in their post-school careers.

CAP does this by:

- Providing Career Fundamentals and Business Foundations courses offered to all students in Year 12 and 13.
- Analysing the capability of each student professionally to ensure the student can effectively complete the courses.
- Sponsorship for students to carry out extra-curricular studies in the last two years of school.

### The CAP curriculum

All students in Year 12 complete a Career Fundamentals course which is a global standard for employers. For CAP students, the diploma-type courses provide a theoretical and academic rigour which underpins the students' academic programme and the career skills-based study provides practical, real-world approaches to learning and helps them to develop skills and competencies required for lifelong learning.

Visit the website to find out more

<https://www.oneschoolglobal.com/cap/>

**Hit the ground  
running**

# Beyond the classroom



## Why is CAP Important?

There is an increasing awareness globally that high school studies alone are not adequately preparing students for the modern workforce. The Career Advantage Programme is aimed at equipping our children with the necessary skills to bring positive benefits to our businesses from day one.

### Important for students:

- improving their employment opportunities
- improving the potential of earning a higher income on graduation
- empowering rapid progress along their career path

### Important for businesses:

- higher value employees that are useful from day one
- employees with an established work ethic; self-starters, self-finishers, self-motivators
- employees that understand the value of study and training

*"Cap is a win-win concept for employers and employees alike. When employing young people, readiness for the 'real world' of work is one of the biggest challenges. With Cap a business has invested in a student and the student has completed 100 hours of paid work experience per year. This means the work experience is taken seriously and is long enough for the student to do real work in a number of meaningful roles. The result is a student with a much better idea of what career choices they may wish to pursue and greater focus as a result. The benefits of this to employers quickly become evident, as school-leavers enter the workplace ready to hit the ground running."*

- Business Owner



## Policies and Documents



Swansea Campus is committed to the safeguarding and protection of its students in line with national guidance.. We endeavour to provide a safe and welcoming environment where all children are safe, respected and valued, as well as being underpinned by the following two key principles:

- A child-centred approach; for services to be effective they should be based on a clear understanding of the needs and views of children.
- Everyone employed and who comes into contact with children at Swansea Campus has a responsibility in relation to safeguarding.

At Swansea Campus we listen to students and maintain a child-centred approach to Safeguarding and Child Protection. We provide a safe environment for students both under and over 18, especially those who are considered vulnerable. All of our Policies are available upon request from our school office or via email: [swansea@uk.oneschoolglobal.com](mailto:swansea@uk.oneschoolglobal.com)

Admissions Policy
Anti-Bullying Policy
Attendance Policy
Complaints Procedure
Curriculum Policy
EAL Policy

Equal Opportunities Policy
Exclusions Policy
Fire Safety (Prevention) Policy
First Aid Policy
Health & Safety Policy
Learning Support (SEND) Policy

RSE Policy
Risk Assessment Policy
Safeguarding & Child Protection Policy
Safer Recruitment Policy
Student Discipline Policy
Supervision of Students Policy
Supporting Students with Medical Conditions

Additionally, the particulars of the arrangements for promoting student health and safety on educational trips and visits are available from the school office on request.



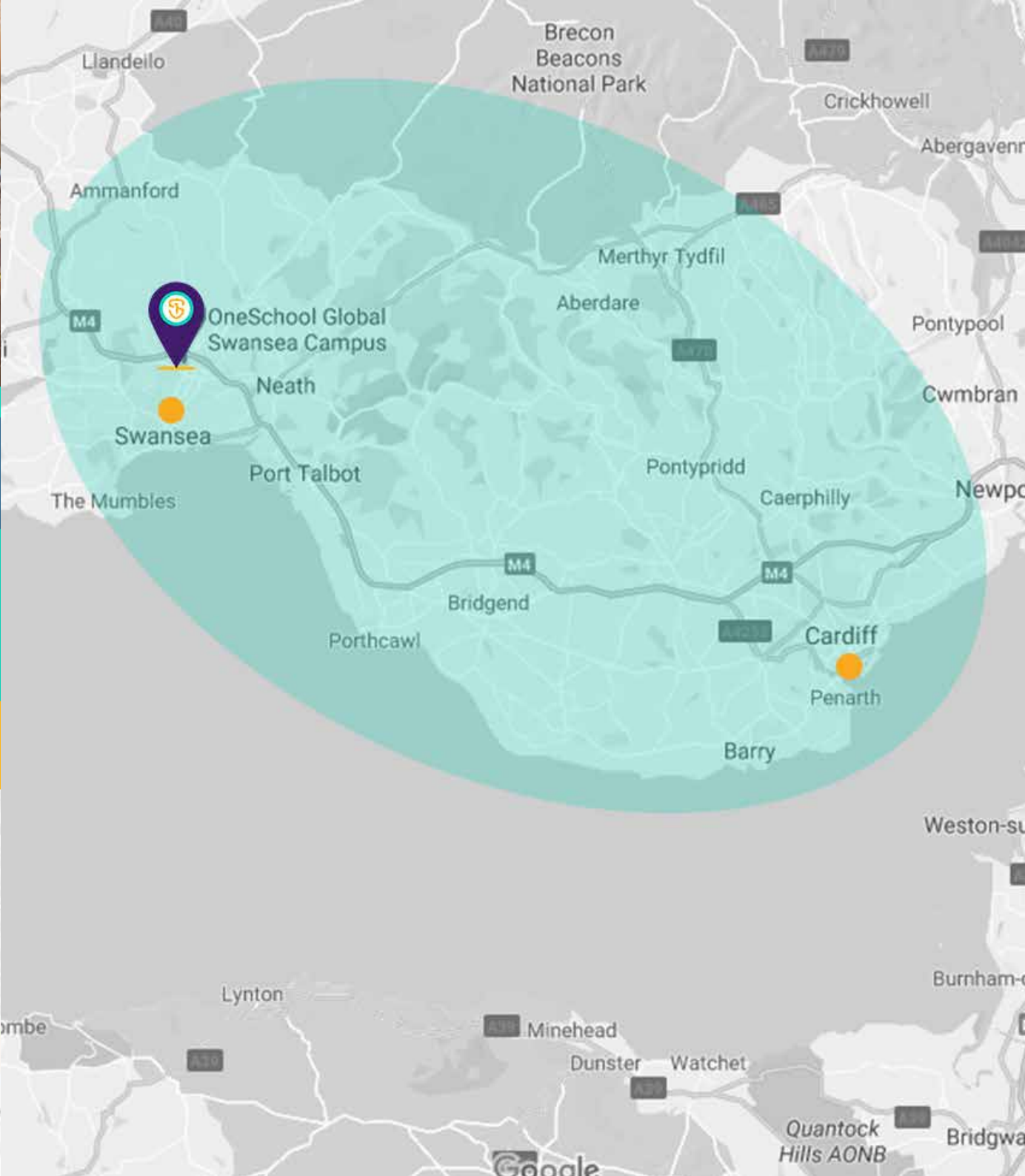
# Teachers and Staffing



All OneSchool Global UK Swansea Campus teachers hold qualifications applicable to their post. In the absence of qualifications in some practical subjects previous experience will be considered if applicable. All staff, governors, trustees and volunteers have been subject to regulatory safer recruitment checks.

Name	Assigned Responsibilities	Qualifications
Sarah Bennett	Regional Principal	-
Eleanor Challenger	History Teacher Literacy Strategy Coordinator MACO	BA Hons Ancient History PGCE
Elizabeth Dainty	RHOD English, LAMDA, Wellbeing Lead	BA English Language PGCE
Callum Dainty	KS2 Teacher	BA Hons Primary Education Studies PGCE, NPQSL
Vaughan Davies	Science Geography, EPQ Coordinator Physical Education Lead CAP Coordinator 6th Form Tutor	BSc Hons Sport & Exercise Sciences PE PGCE
Sarah Fyans	Art Design Technology	BSc Product Design PGCE
Sallyanne Greenslade	Campus Principal	NPQSL BEd (Hons) Business KSPD AAT
Beth Grey	HTLA	NNEB Nursery Nursing, Oral Skills Nursery Nursing, Speech & Language Support Level 2
Darren Hodson	Yr 3 & 4 Primary Teacher	-
Dr Neil Howe	National cover for History Geography English Citizenship Global Perspectives Exams Officer	Associate of The Higher Education Academy PGCE Doctor of Philosophy MA Historical Studies BA History

Name	Assigned Responsibilities	Qualifications
Kim May	Campus Admin Officer	-
Paul Piontecki	Premises Manager	Electrician Mechanical Maintenance Craftsman Site Safety Plus First Aid at Work EITB Certificate
Andrew Portsmouth	Assistant Campus Principal DSL - Safeguarding A-level Physics ARHOD Science, KS5 Lead, Digital Mastery Champion- incl. Lead on ICT & Canvas maintenance NQT Coordinator, Data Protection Officer	BSc Hons Physics with Laser PGCE
Anita Reulier-Davies	French Food Studies	Degree in Business French (GTP)
Angharad Thomas	Acting Campus Principal DDSL - Safeguarding Maths; Physical Education Numeracy Coordinator, KS3&4 Lead, DSNHL, ALNCO, Health & Safety Lead, Teaching & Learning Lead Yrs. 3-13 Estyn Peer Inspector Senior Mental Health lead	BA Econ PGCE
Sharon Wells	Campus Admin Officer Exam administration	-
Dawn White	Teaching Assistant	Level 3 TA





## School Information



### OneSchool Global UK Swansea Campus

Sway Road, Morriston, Swansea, SA6 6JA

- Tel: 01792 581221
- [swansea@uk.oneschoolglobal.com](mailto:swansea@uk.oneschoolglobal.com)
- [www.oneschoolglobal.com/swansea](http://www.oneschoolglobal.com/swansea)

Monday to Friday 08:45 - 15:00

Proprietor: **OneSchool Global UK**

OSG UK No: 614  
Examination Centre No. 68888  
Charity No: 1181301  
DfE No: 670/6023

#### Complaints and Exclusions (2023-2024):

There were no complaints or exclusions during the academic year 2023-2024.

#### CA Team

Mr Max Dormer - Lead CA  
Mr Alex Nunn

#### Campus Board Members

Mr Gavin Sims  
Mr Daniel Robins  
Mr Nigel Hill  
Mr Simon Rusling  
Mr Reuben Brown

#### Acting Campus Principal

Mrs Angharad Thomas

#### OSG UK Representatives

Mr George Turner  
Miss Sarah Bennett

#### Holiday/Out of Hours Contact

Mr Paul Piontecki Tel: 07783 482165  
email:  
[paul.piontecki@uk.oneschoolglobal.com](mailto:paul.piontecki@uk.oneschoolglobal.com)

#### Correspondence for the Chair of the Trustees should be addressed to the Principal Office

Mr George Turner  
OneSchool Global UK Swansea Campus  
The Precinct Wawick  
Poseidon Way  
Warwick  
CV364 6BY

For further information and the school calendar please visit our website: [www.oneschoolglobal.com/swansea](http://www.oneschoolglobal.com/swansea)  
Visit the OneSchool Global UK website: [www.oneschoolglobal.com](http://www.oneschoolglobal.com)

“

It's a fab place to work and I look forward to coming here every day. The old saying 'Choose a job you love and you'll never work a day in your whole life' is never truer than here as it's a complete privilege to contribute in an environment like this one.

Teacher

I find that my children are engaged with learning and enthused about school.

Parent

Our school is very unique from other schools in the area as it has taken on the concept of self-directed learning. As a result it has an outstanding culture of excellence and an unparalleled work ethic.

Student

”





**OneSchool**  
**Global**

*Learning to learn*

**OneSchool Global UK Swansea Campus**

Sway Road  
Morriston  
Swansea  
SA6 6JA  
Tel: 01792 581221  
Email: [swansea@uk.oneschoolglobal.com](mailto:swansea@uk.oneschoolglobal.com)

**OneSchool Global UK**

The Precinct Wawick  
Poseidon Way  
Warwick  
CV346BY  
Tel. 0330 055 5600  
Email: [support@uk.oneschoolglobal.com](mailto:support@uk.oneschoolglobal.com)